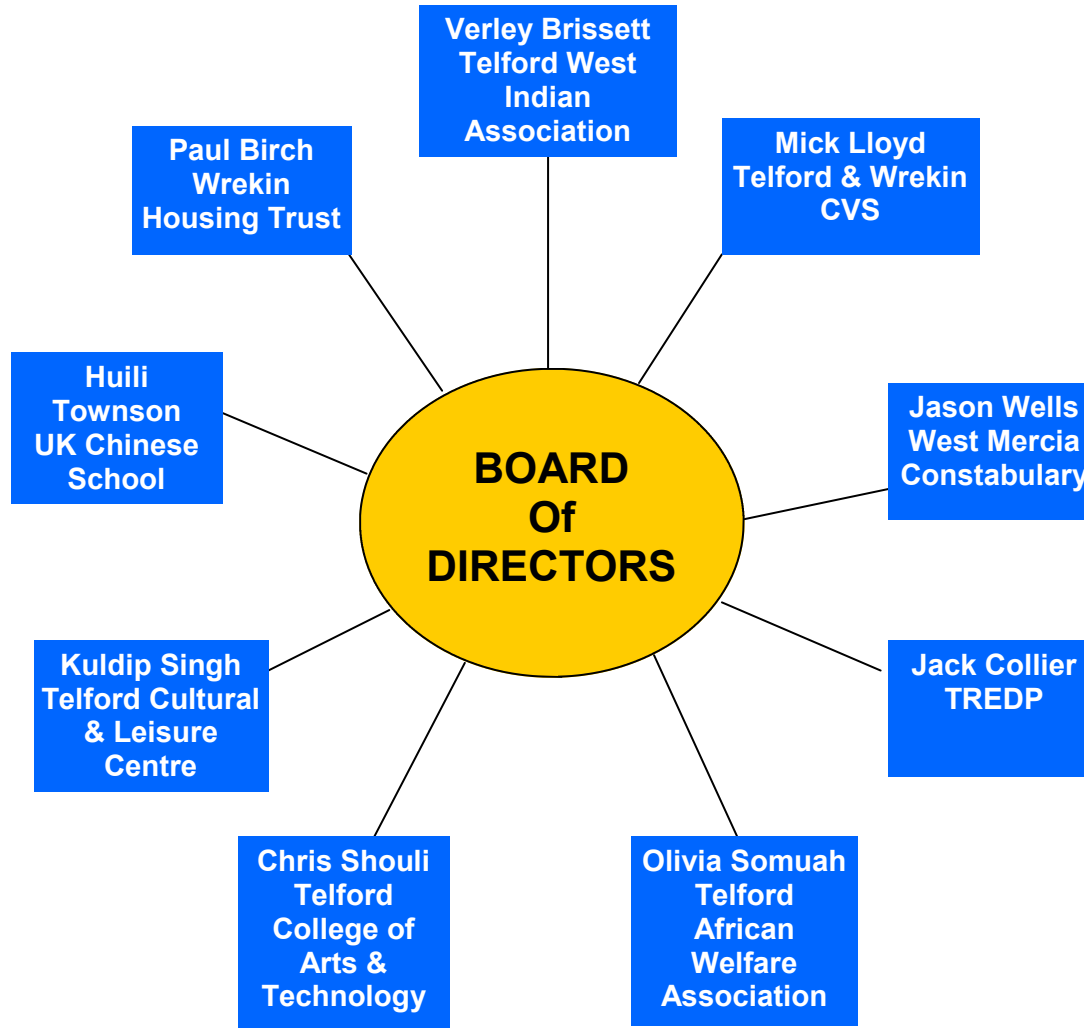


TELFORD RACE, EQUALITY AND DIVERSITY PARTNERSHIP ORGANISATIONAL CHART

STAFF

- Diane Cuff
Partnership
Manager
- Pam Carline
Office
Administrator
- Vacant*
Community
Development Co-ord
(P/T until March 2011)
- Dawn Dcaccia
Community
Development Worker
(P/T until March 2011)
- Asia Begum
BME Health & Wellbeing
Co-ord
(P/T until March 2011)
- Simeon Greene
Project Worker—
Vulnerable Communities
(P/T until February 2010)
- Jack Collier
Volunteer
- Margaret Beresford
Volunteer
- Jaya Naido
Volunteer



PARTNERS FORUM

- Telford & Wrekin CAB
- Victim Support Shropshire
- Telford & Wrekin Interfaith Group
- Gender Matters
- A4U (DIAL) Shropshire, Telford & Wrekin
- Community Foundation for Shropshire & Telford
- Telford & Wrekin Senior Citizens' Forum
- Telford College of Arts & Technology
- Wrekin Housing Trust
- Shropshire Fire & Rescue Service
- Terrence Higgins Trust
- Hadley Men's Get Together Group / Sikh Temple
- Disability Forum
- Senior Citizens' Forum—Elderly Asian
- Telford Cultural & Leisure Centre/Sikh Community
- Shropshire Bangladeshi Welfare Society
- Telford & Wrekin CVS
- West Mercia Police—Telford Division
- Telford & Wrekin Council
- Beth Johnson Housing Association
- Unison
- Age Concern Shropshire
- Equal Project
- Telford African Welfare Association
- Telford Christian Council
- Telford & Wrekin PCT
- The Learning Point
- UK Chinese School
- West Mercia Probation Service
- Wellington Town Council
- Bromford Housing Group
- Gender Advisory Bureau